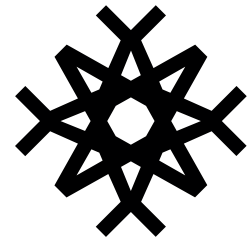



# WATER-POWERED DRILLING

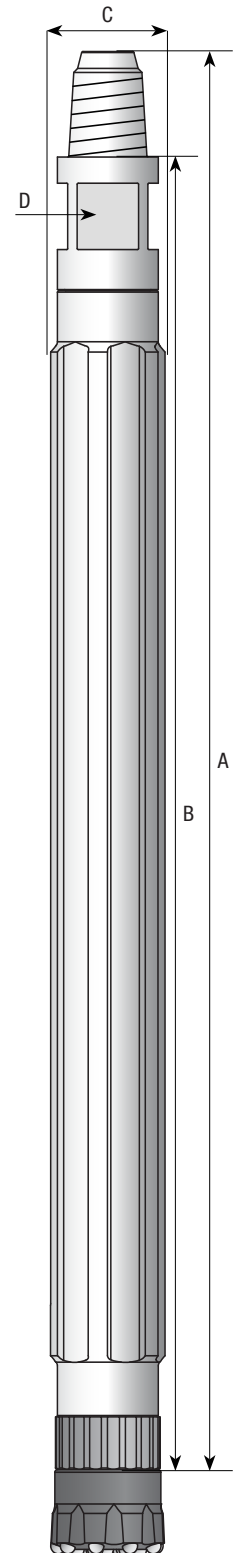
## TECHNICAL SPECIFICATION: W80 HAMMER



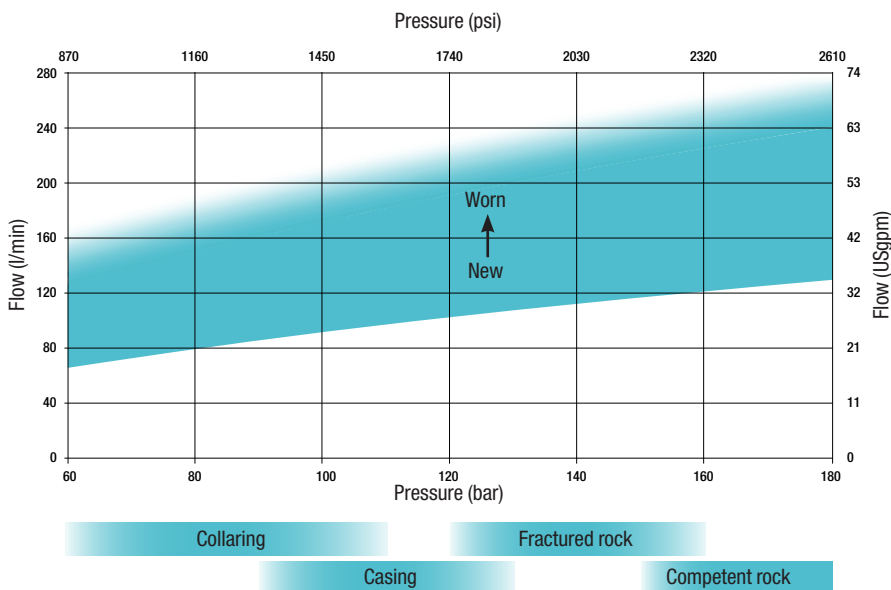
**wassara**

The Wassara technology uses water to power the DTH hammer. This makes it the ideal choice for drilling in sensitive areas as well as for drilling long straight holes. The water-powered hammer is capable of penetrating almost any formation while maintaining speed and accuracy.

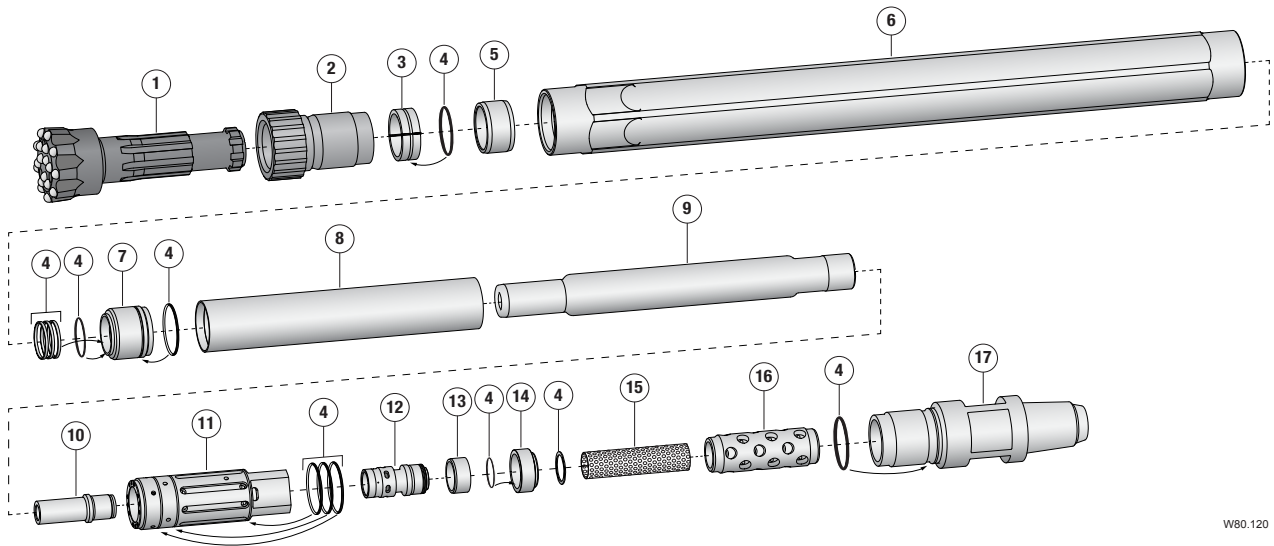
Technical specifications – W80.120	
<b>Length A</b>	1 049 mm (41.3")
<b>Length B</b>	977 mm (38.5")
<b>Diameter C</b>	Ø 91 / 98 mm (3.6 / 3.9")
<b>Size D</b> 	Ø 64 mm (2.5")
<b>Weight</b>	32 kg (70.5 lbs)
<b>Bit diameter</b>	Ø 95 / 102 mm (3.7 / 4.0")
<b>Operating pressure interval</b>	60 - 180 bar (870 - 2 610 psi)
<b>Water consumption interval</b>	70 - 270 l/min (18 - 70 USgpm) new to worn
<b>Frequency at maximum operating pressure</b>	60 Hz (3 600 blows/min)
<b>Feed force, formation dependant</b>	7 000 - 10 000 N (1 570 - 2 250 lbf)
<b>Rotation speed, formation dependant</b>	60 - 100 rpm
<b>Rotation torque, formation dependant</b>	800 - 1 500 Nm (590 - 1 100 lbf-ft)
<b>Drill rod</b>	Wassara Drill rod Ø 76 mm (3"), Thread API 2 3/8" Reg
<b>Recommended water pump</b>	WASP100D / WASP100E VSD, 360 l/min (95 USgpm) @ 200 bar (2 900 psi)
<b>Bit shank</b>	Wassara 3.5



### WATER PRESSURE/FLOW CHART



# PARTS LIST: W80.120



W80.120

Pos	Detail	Part no
	<b>Hammer W80, Ø 91 mm</b>	1002065-91
	Hammer W80, Ø 98 mm	1002065-98*
<b>1</b>	Drill bit Ø 95 mm Speed SB	3000011
	Drill bit Ø 102 mm Speed SB	3000126
<b>2</b>	Chuck	1000737
<b>3</b>	Bit retainer	1002877
<b>4</b>	Seal kit	1, 2 1002077
<b>5</b>	Guide sleeve	1000061
<b>6</b>	Hammer case Ø 91 mm	1001136-91
	Hammer case Ø 98 mm	1001136-98
<b>7</b>	Piston bushing	1, 2 1000063
<b>8</b>	Inner tube	1001125

Pos	Detail	Part no
<b>9</b>	Piston	1, 2 1001124
<b>10</b>	Sliding case	1000259
<b>11</b>	Valve house	2 1001123
<b>12</b>	Valve	2 1001078
<b>13</b>	Sleeve	1000265
<b>14</b>	Lid	1504283
<b>15</b>	Filter	1, 2 1001386
<b>16</b>	Filter support	2000004
<b>17</b>	Backhead API 2 3/8" Reg Pin	1000281

*Spare part kit 1*

1002217

*Spare part kit 2*

1002218

\* Available on request